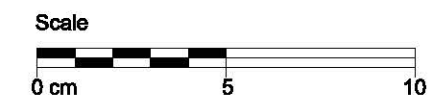


- 04 RHEINZINK-Angled Standing Seam Facade
- 16 RHEINZINK-Building Profile
 - e Receiver strip, with sealant tape
 - g Lintel profile
- 18 Support Profil
 - a Galvanised steel
- 19 Separating Layer
 - d Breather membrane
- 20 Substructure
 - h WBP plywood or OSB Grade 3
Min. 18mm thick
- 21 Batten/ Squared Timber
 - Batten
 - Squared Timber
- 23 Supporting Structure
- 25 Thermal Insulation
- 30 Ventilated Air Space
- 31 Air-Tight Layer



STANDARD DETAIL	
Window lintel	Title
+one part lintel profile	Scale
-	1:2
	Size
	A3
Detail-Nr.	Drawn
0903030201012300001_GB_en	gam
	Date
	24.05.12
<p>The detail describes an optional design in standard cases based on a European climate. Any user of this document is responsible to verify the feasibility of the solution with respect to the specific local situation and conditions. Using the documents provided by RHEINZINK is a service, which excludes liability for damages or claims of any kind. Contingent liability for malice or gross negligence is unaffected.</p>	